

Avance® Solo

Avance® Solo is a portable single patient use negative pressure system¹, that aims to promote faster healing, improved patient mobility, and the reduction of surgical site occurrences, such as SSIs. It is indicated for use on closed surgical incisions (ciNPT) and open wounds (dNPWT).

1. Pump

- Regulates pressure to deliver a continuous -125mmHg negative pressure for 14 days².
- Visual and audible alarms for leakage, blockage and low battery, promptly address issues^{2,3}.
- Portable and light weight – minimising impact of patient mobility^{2,4}.

2. 50ml canister

- Excess fluid is transferred to the canister⁵.
- Aims to reduce the potential for the dressing becoming fully saturated⁵.
- Canister may be replaced by clinician, carer or the patient themselves^{6,7}.

3. CFM Technology™

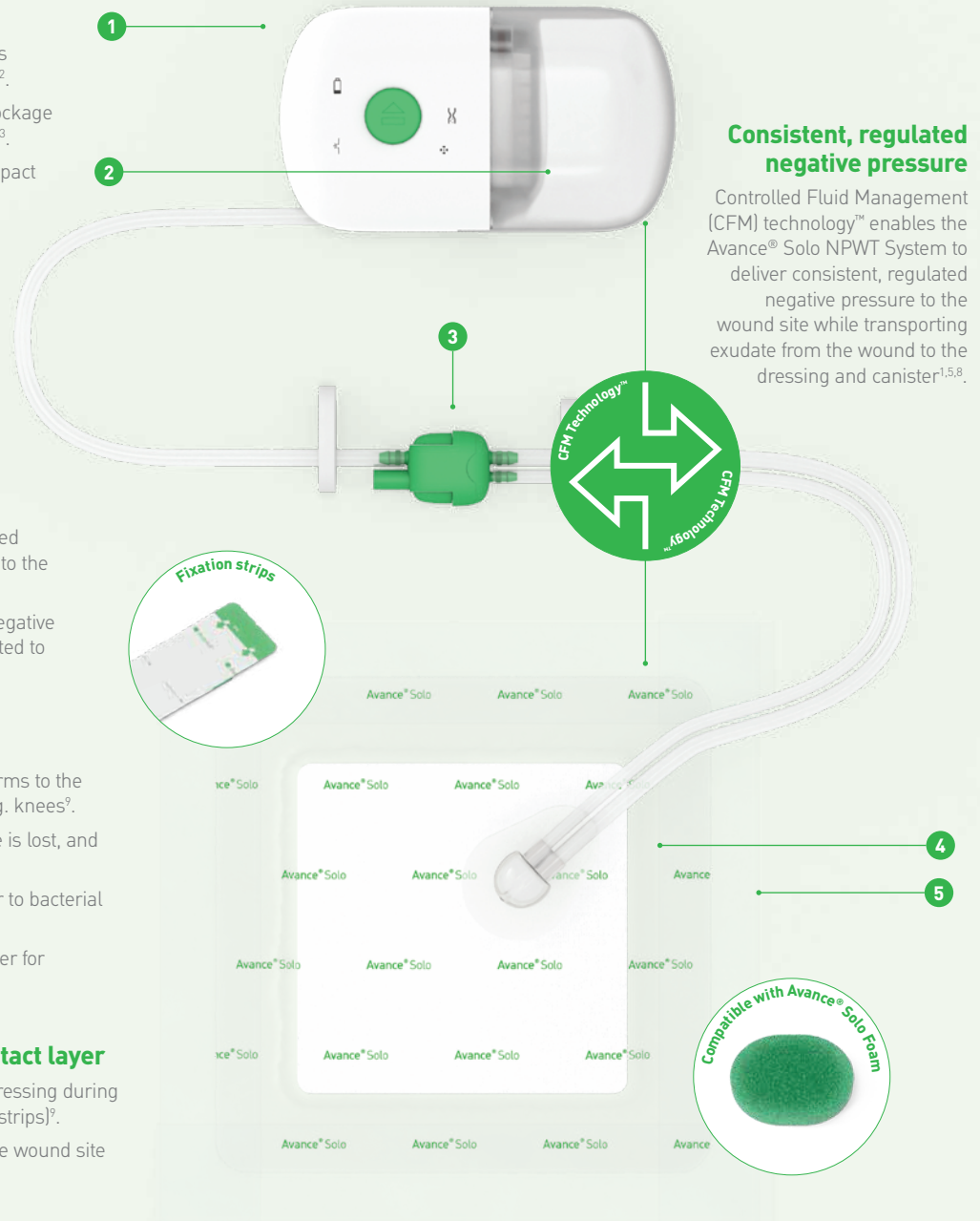
- Controlled air inlet ensures uncompromised continuous negative pressure is delivered to the wound bed^{5,8}.
- Repetitive pump activation ensures that negative pressure is maintained while air is circulated to remove excess fluid to the canister^{2,5,9}.

4. Border dressing and Foam

- Absorptive, multilayer dressing that conforms to the body contours at difficult-to-dress area e.g. knees⁹.
- Absorbs exudate even if negative pressure is lost, and retains fluid within the dressing⁹.
- Waterproof backing film provides a barrier to bacterial and viral contamination^{9,10}.
- A single use polyurethane foam wound filler for cavity wounds.

5. Safetac® Technology wound contact layer

- Makes it possible to lift and readjust the dressing during application (prior to application of fixation strips)⁹.
- Proven to minimise pain and trauma to the wound site and surrounding skin upon removal¹¹⁻¹⁶.



Consistent, regulated negative pressure

Controlled Fluid Management (CFM) technology™ enables the Avance® Solo NPWT System to deliver consistent, regulated negative pressure to the wound site while transporting exudate from the wound to the dressing and canister^{1,5,8}.

Avance® Solo

Single-use negative pressure therapy
– without compromise



What is negative pressure wound therapy?

Negative Pressure Wound Therapy (NPWT) is a method of treating wounds using suction. The dressing is airtight and the pump applies negative pressure, clearing the wound of exudate and fluids.

Areas of use



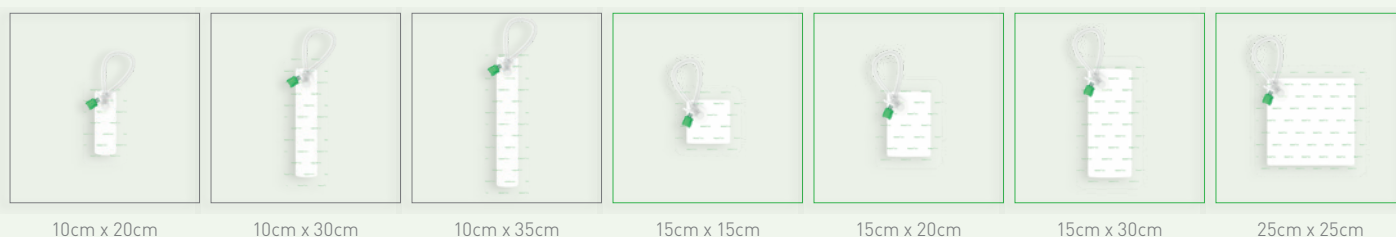
ciNPWT – Closed surgical incisions

Negative pressure wound therapy (NPWT) is used to remove exudate from closed incision wounds after orthopaedic (primary and revision arthroplasties), cardiothoracic (CABG and sternotomy), obgyn (c-section and abdominal hysterectomy), general/colateral (laparotomy and ventral hernia repair), vascular (groin incisions), and plastic surgeries (abdominal wall reconstruction and mastectomy).



dNPWT – Acute and chronic open wounds

Avance Solo NPWT system is indicated for removal of low to moderate amounts of exudate from chronic, acute, traumatic, subacute and dehisced wounds, as well as from grafts and flaps.



10cm x 20cm

10cm x 30cm

10cm x 35cm

15cm x 15cm

15cm x 20cm

15cm x 30cm

25cm x 25cm

Avance Solo assortment

Art. no	ciNPWT
8881020	Avance Solo set (10cm x 20cm)
8881030	Avance Solo set (10cm x 30cm)
8881035	Avance Solo set (10cm x 35cm)
881020	10cm x 20cm dressing
881030	10cm x 30cm dressing
881035	10cm x 35cm dressing
Art. no	dNPWT
8880050	Pump and canister set
880050	Replacement canisters
881515	15cm x 15cm dressing
881520	15cm x 20cm dressing
881530	15cm x 30cm dressing
882020	20cm x 20cm dressing
882525	25cm x 25cm dressing
882000	Foam wound filler

Regular pulsing sound

Note that the Avance Solo system will emit a regular pulsing sound from the cycling of the pump. This is normal and confirmation that the system is operating^{2,5,9}.

Precautions

You should consult your healthcare professional if you experience any problems. This includes bleeding, elevated blood pressure or issues with the device. For warnings and precautions see the healthcare professional IFU, included in the product package.



The Avance® Solo Border Dressing is available in a wide range of shapes and sizes. **Scan the QR code to find the assortment available in your region. www.AvanceSolo.com**

References: 1. Avance Solo CMM Data on file [ref 18]. 2. Avance Solo CMM Data on file [ref 15]. 3. Avance Solo CMM Data on file [ref 16]. 4. Avance Solo CMM Data on file [ref 24]. 5. Avance Solo CMM Data on file [ref 10]. 6. Avance Solo CMM Data on file [ref 13]. 7. Avance Solo CMM Data on file [ref 14]. 8. Avance Solo CMM Data on file [ref 23]. 9. Avance Solo CMM Data on file [ref 17]. 10. Avance Solo CMM Data on file [ref 11]. 11. Van Overschelde, P. et al. A randomised controlled trial comparing two wound dressings used after elective hip and knee arthroplasty. Poster presentation at 5th Congress of the WUWHs, Florence, Italy, 2016. 12. Silverstein P. et al. An open, parallel, randomized, comparative, multicenter study to evaluate the cost-effectiveness, performance, tolerance, and safety of a silver-containing soft silicone foam. Journal of Burn Care and Research, 2011. 13. Gee Kee E.L. et al. Randomized controlled trial of three burns dressings for partial thickness burns in children. Burns, 2014. 14. David F. et al. A randomised, controlled, non-inferiority trial comparing the performance of a soft silicone-coated wound contact layer (Mepitel One) with a lipidocolloid wound contact layer (UrgoTul) in the treatment of acute wounds. International Wound Journal, 2017. 15. Patton M.L. et al. An open, prospective, randomized pilot investigation evaluating pain with the use of a soft silicone wound contact layer vs bridal veil and staples on split thickness skin grafts as a primary dressing. Journal of burn care & research, 2013. 16. Bredow J. et al. Randomised clinical trial to evaluate performance of flexible self-adherent absorbent dressing coated with silicone layer after hip, knee or spinal surgery in comparison to standard wound dressing. Poster presentation at WUWHs Congress, Italy, 2016.

Find out more at www.molnlycke.co.uk

Mölnlycke, Unity House, Medlock Street, Oldham, OL1 3HS. Tel +44 (0) 800 731 1876
The Mölnlycke, Avance and Safetac trademarks, names and logos are registered globally to one or more of the Mölnlycke Health Care group of companies. © 2022 Mölnlycke Health Care. All rights reserved. UKWC1099

Mölnlycke®